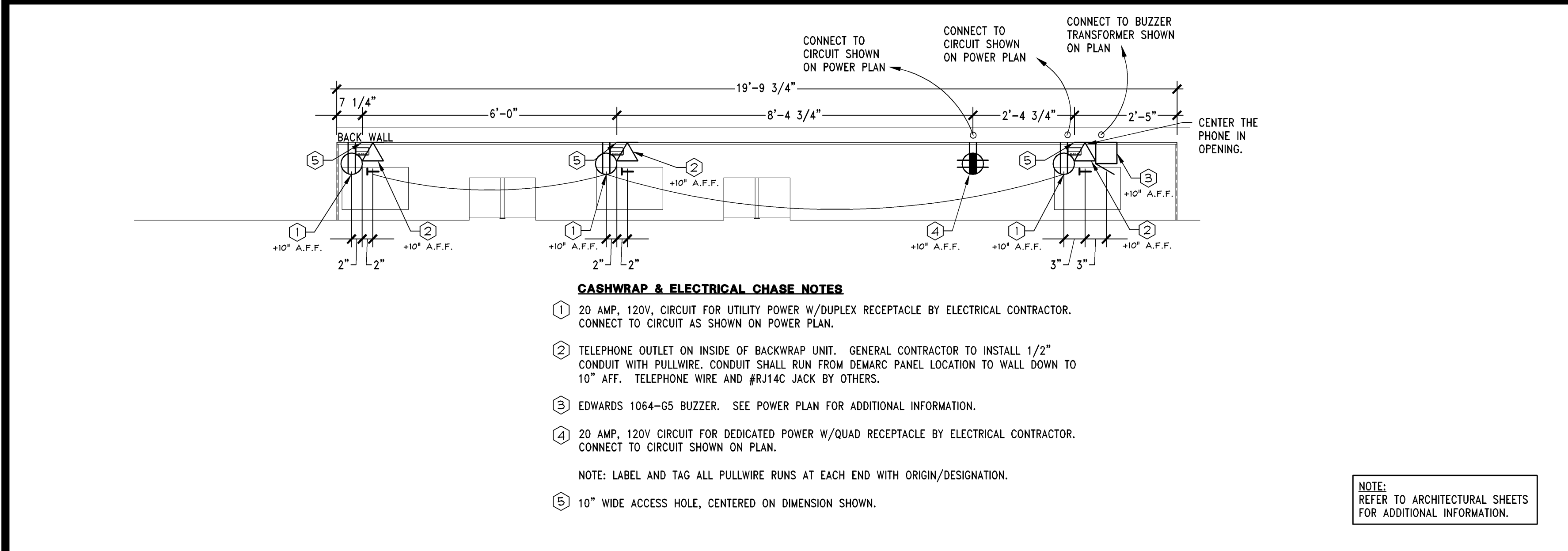
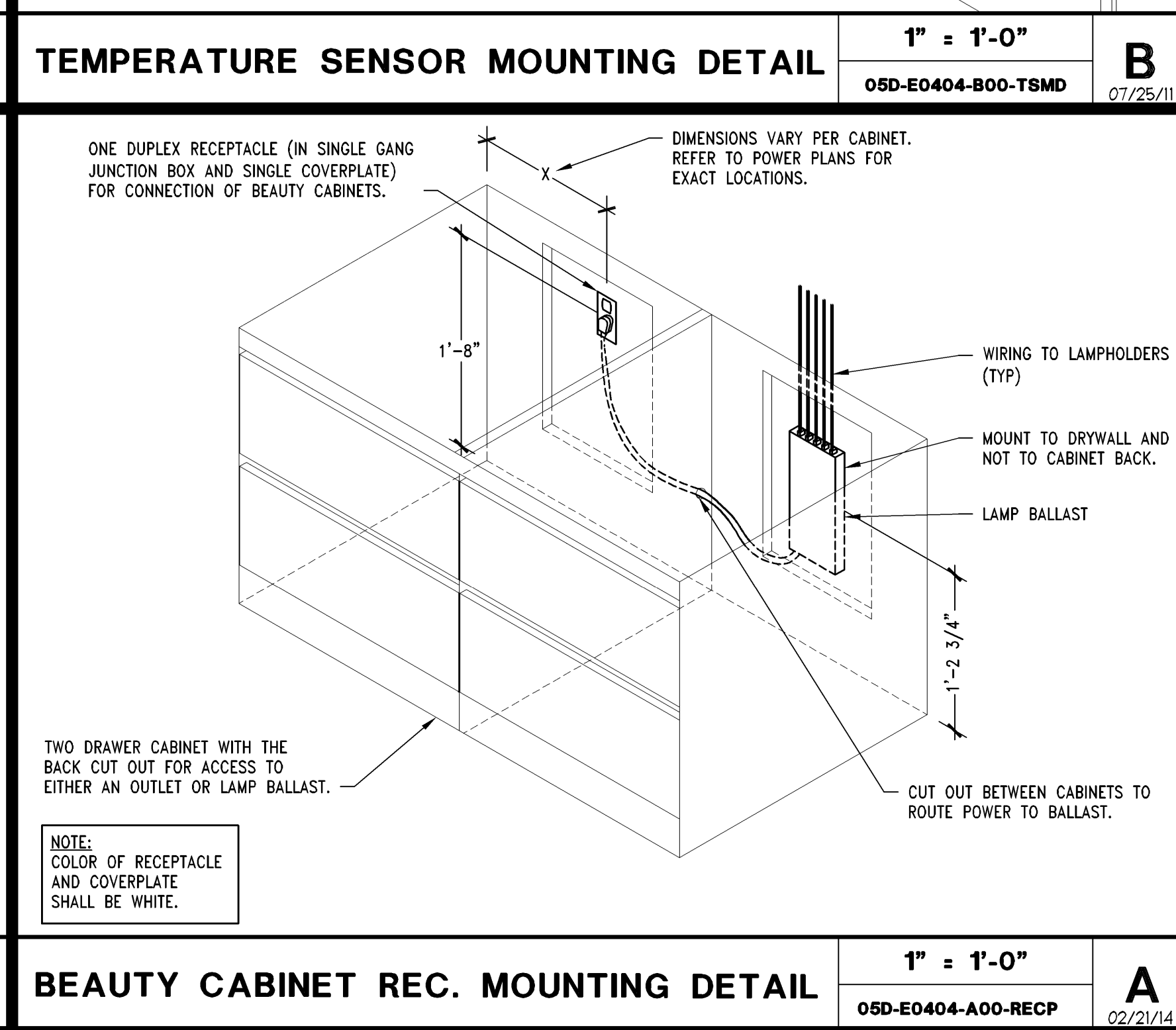
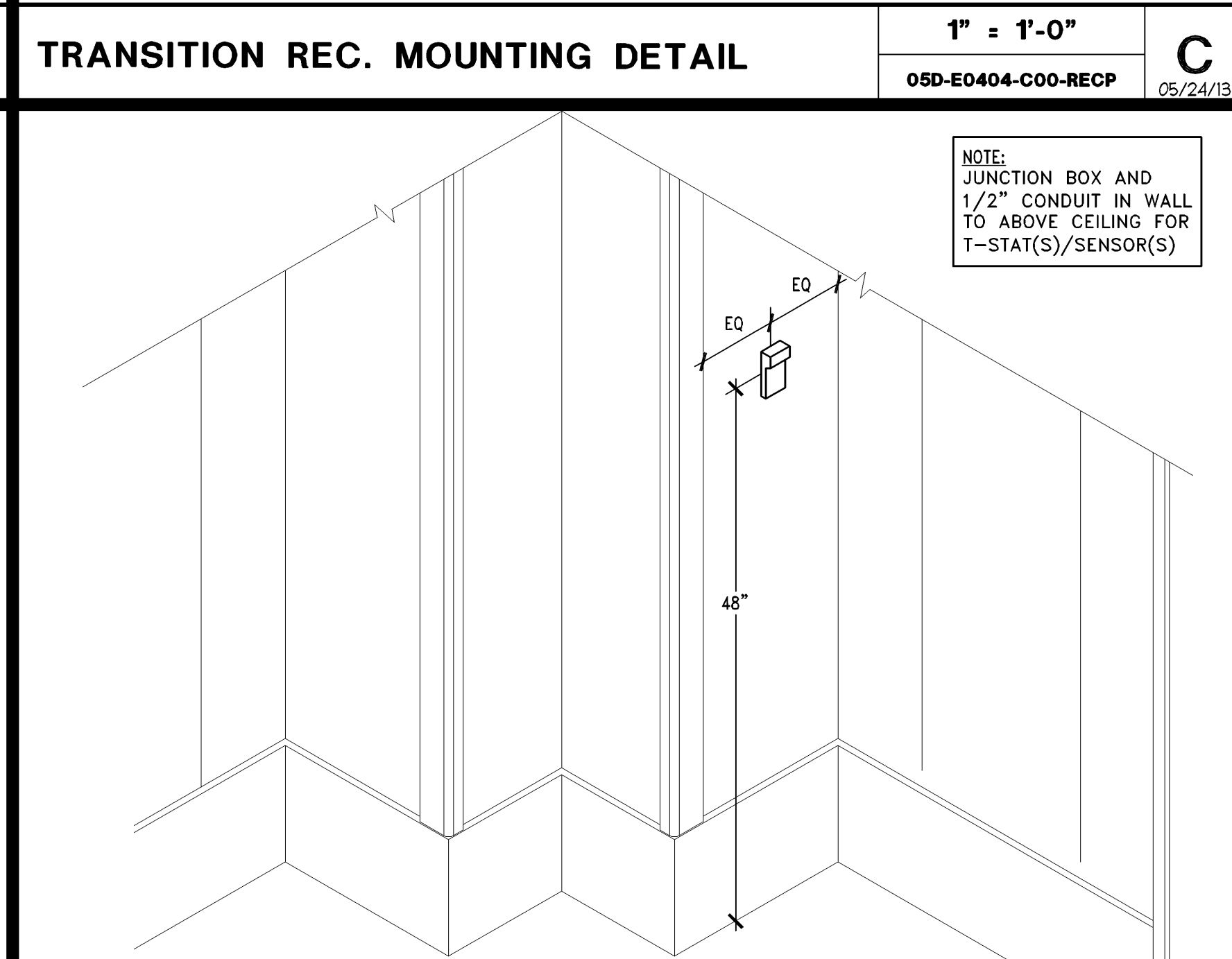
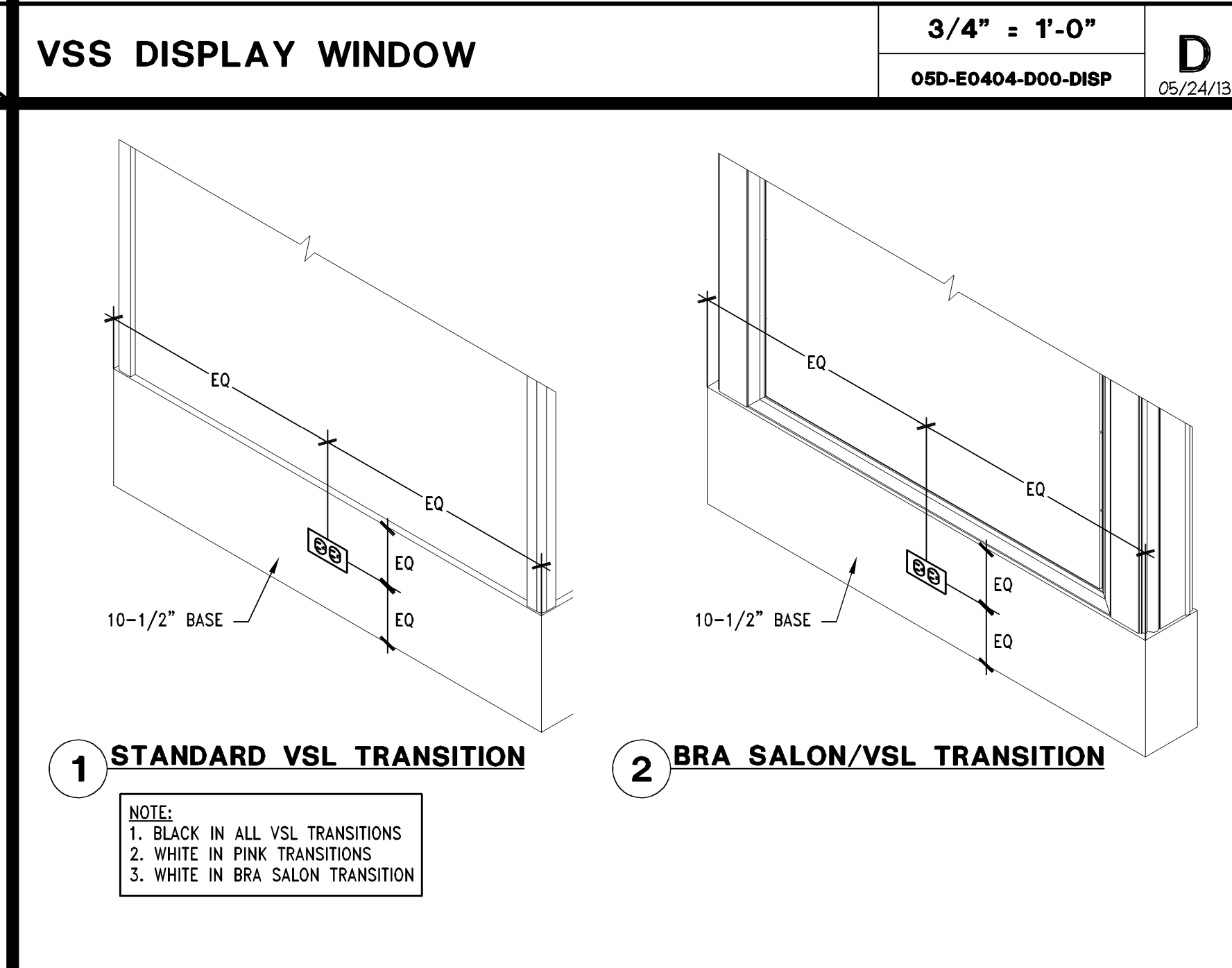
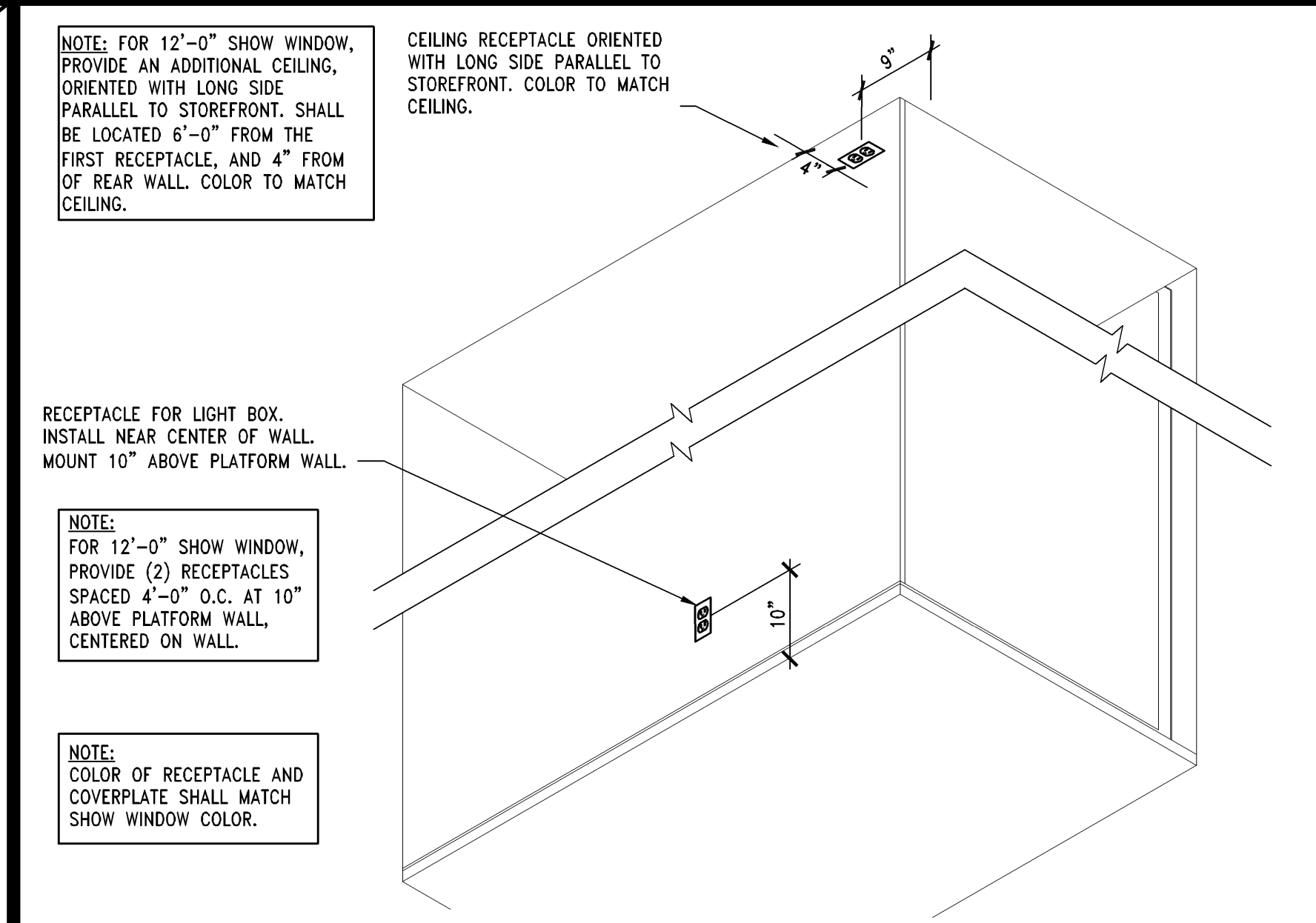
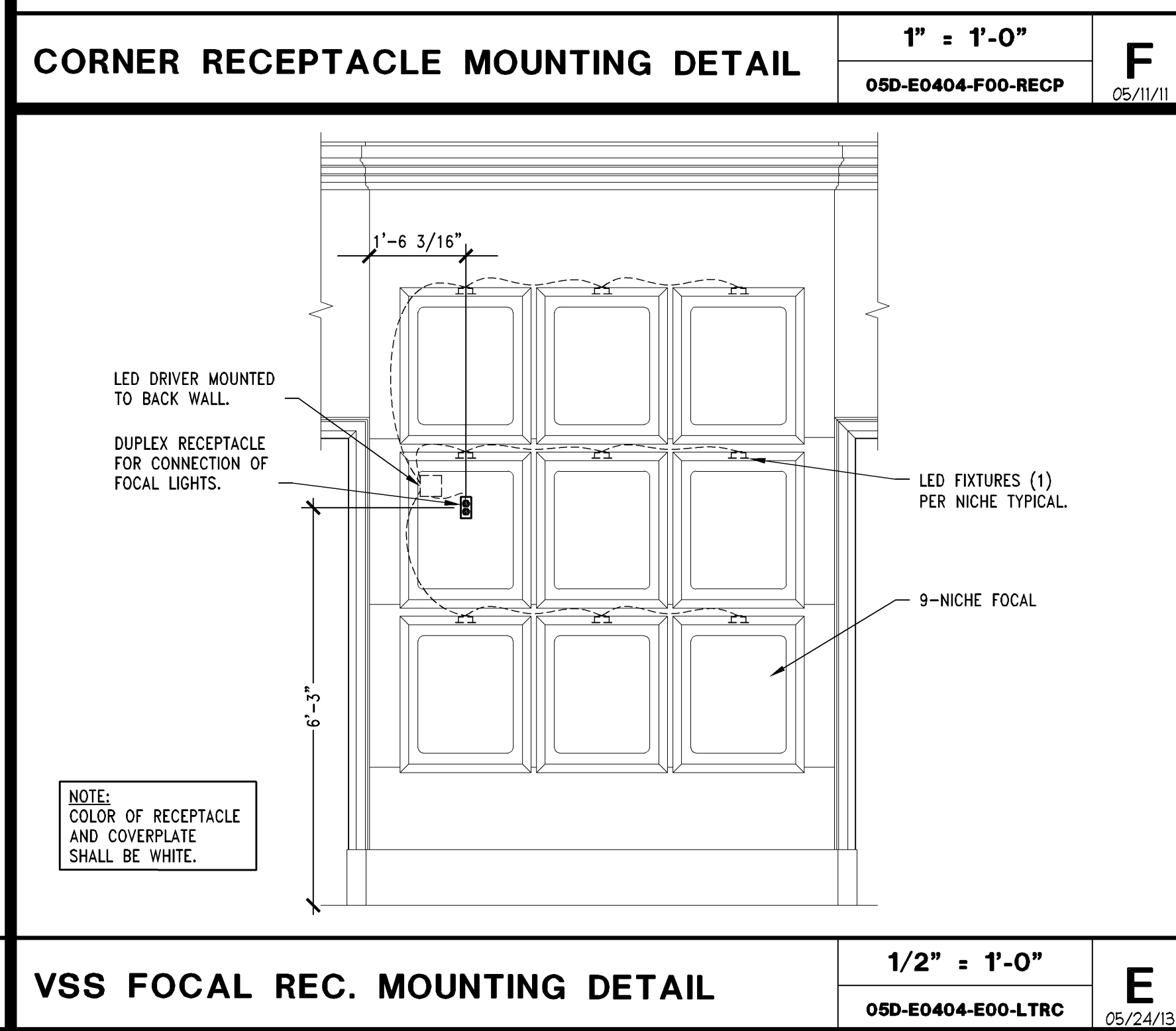
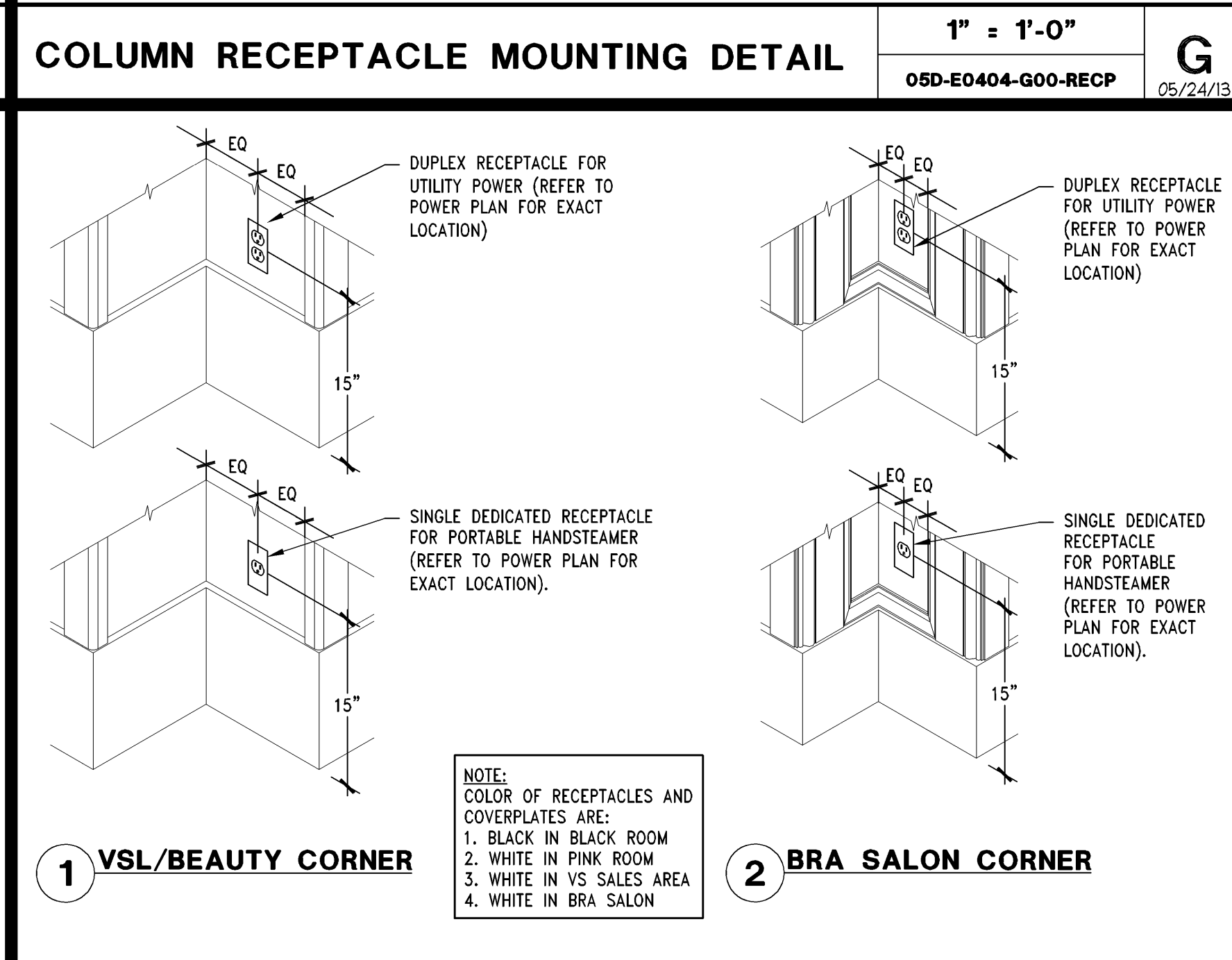
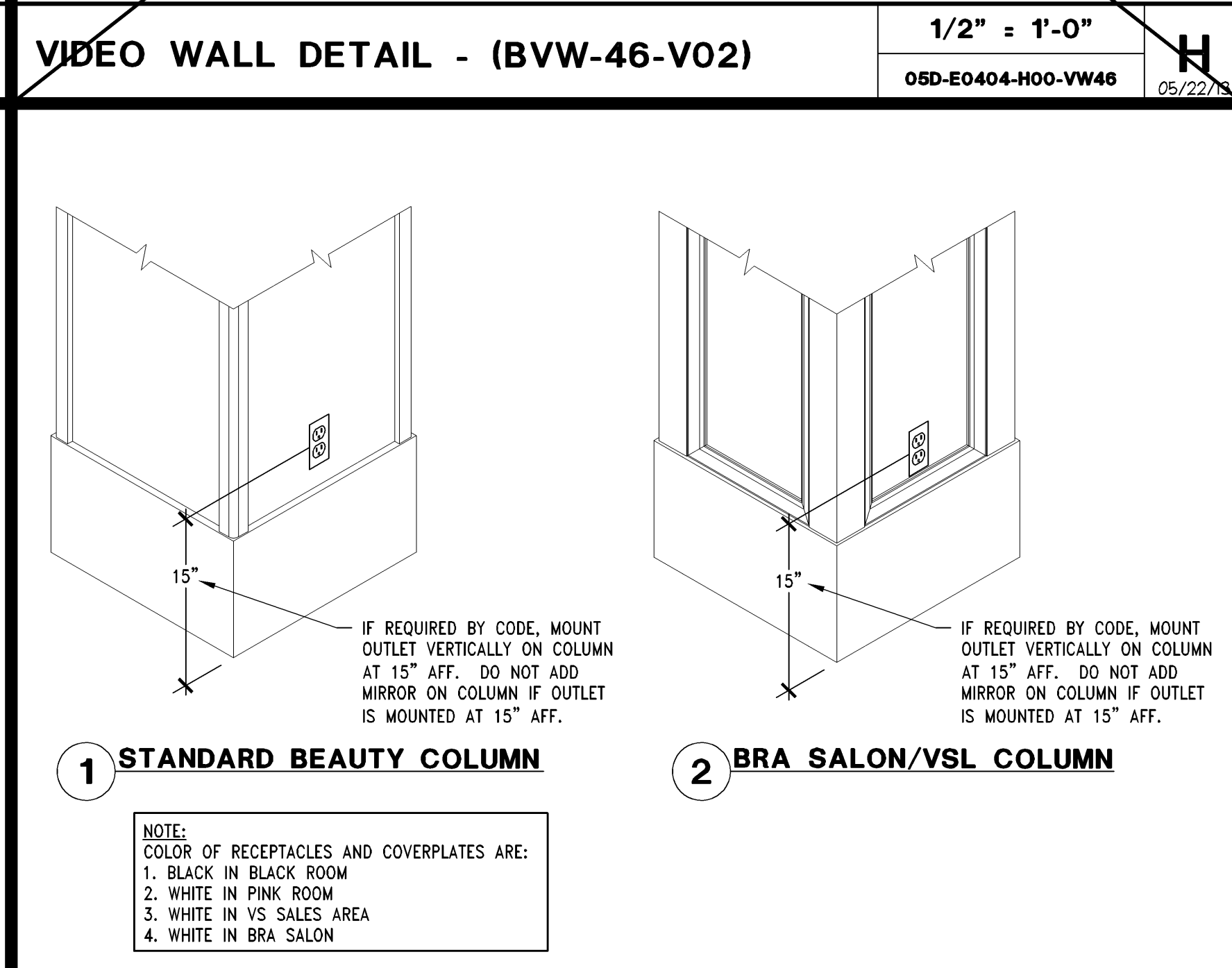
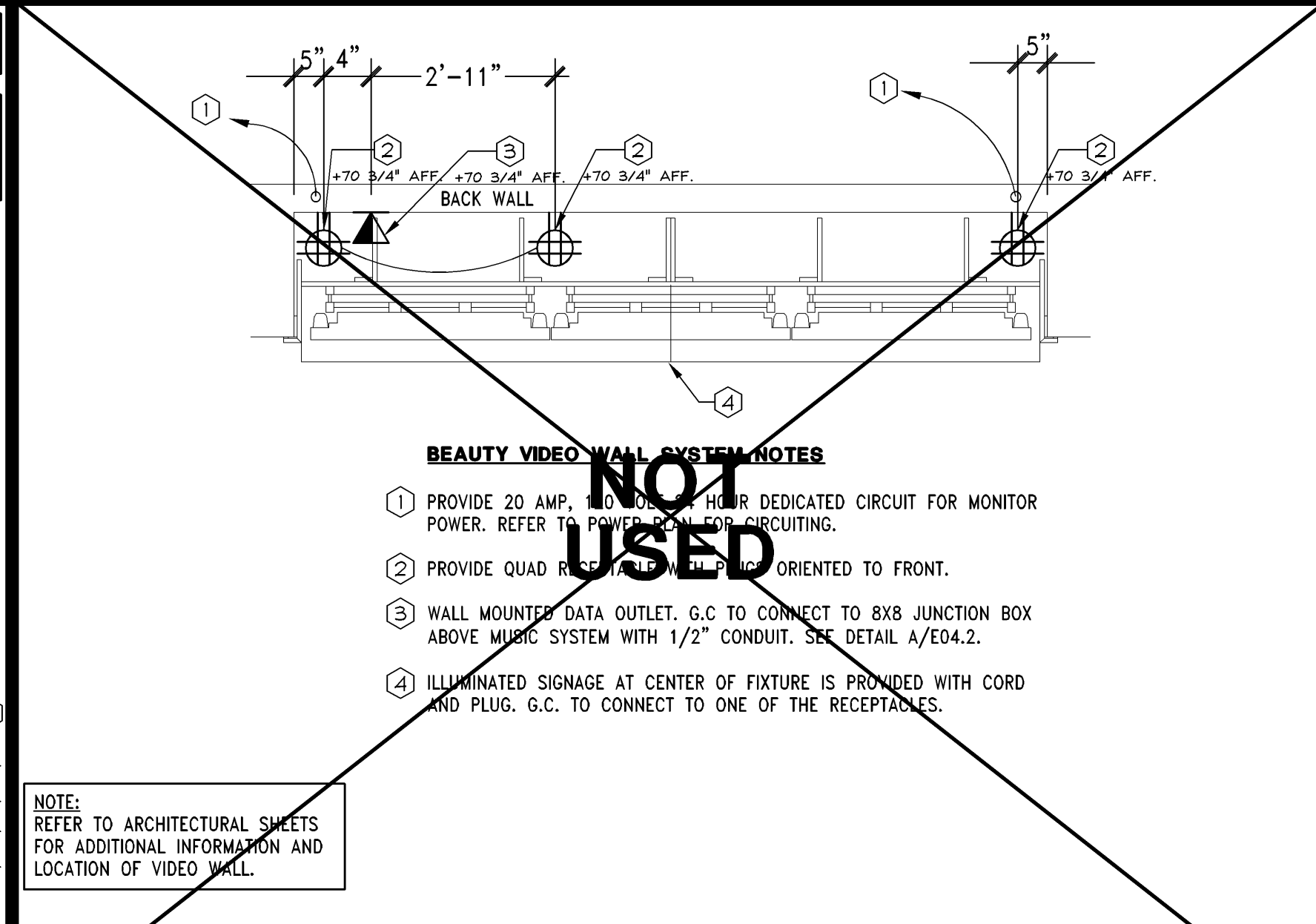
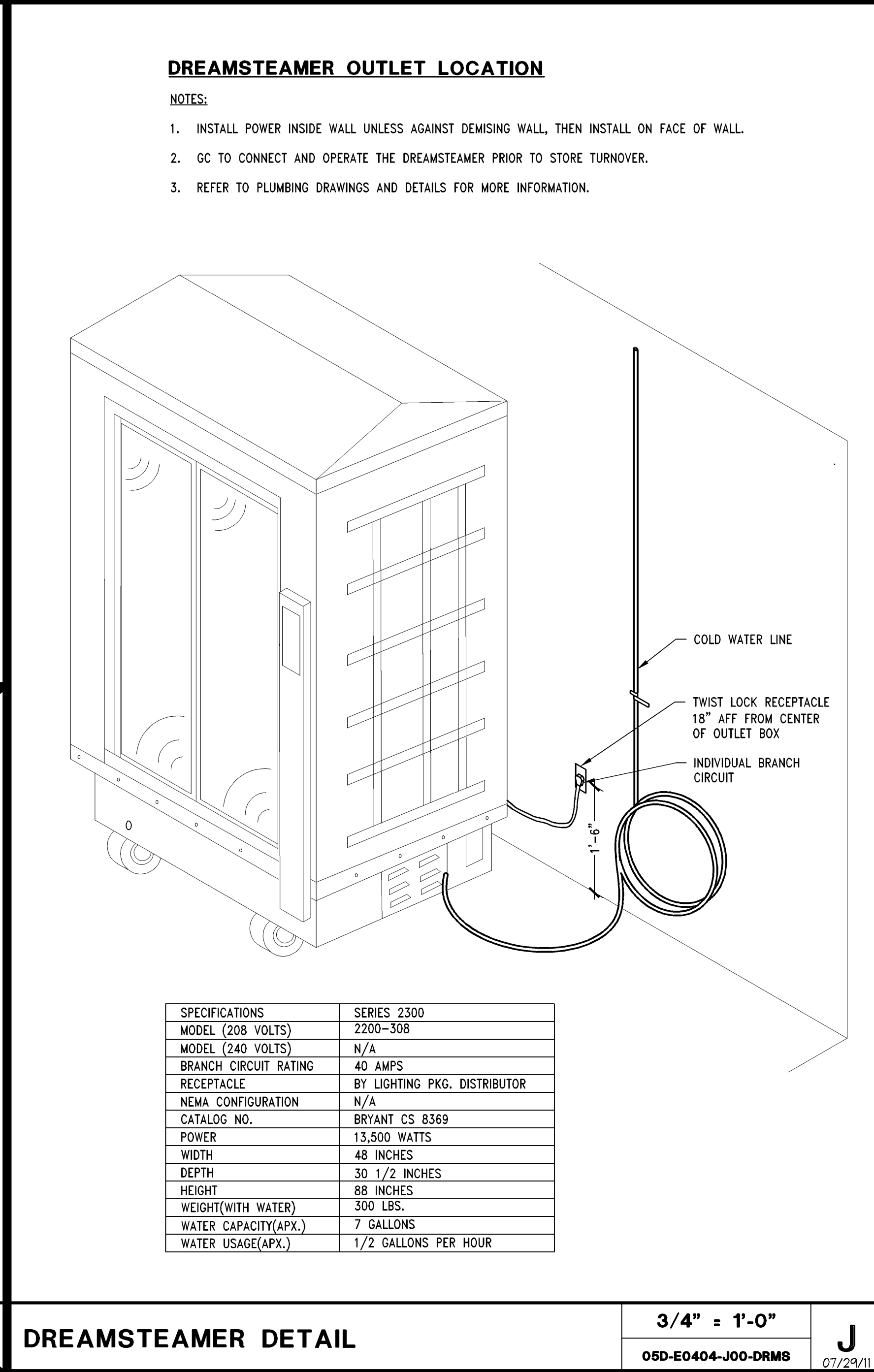
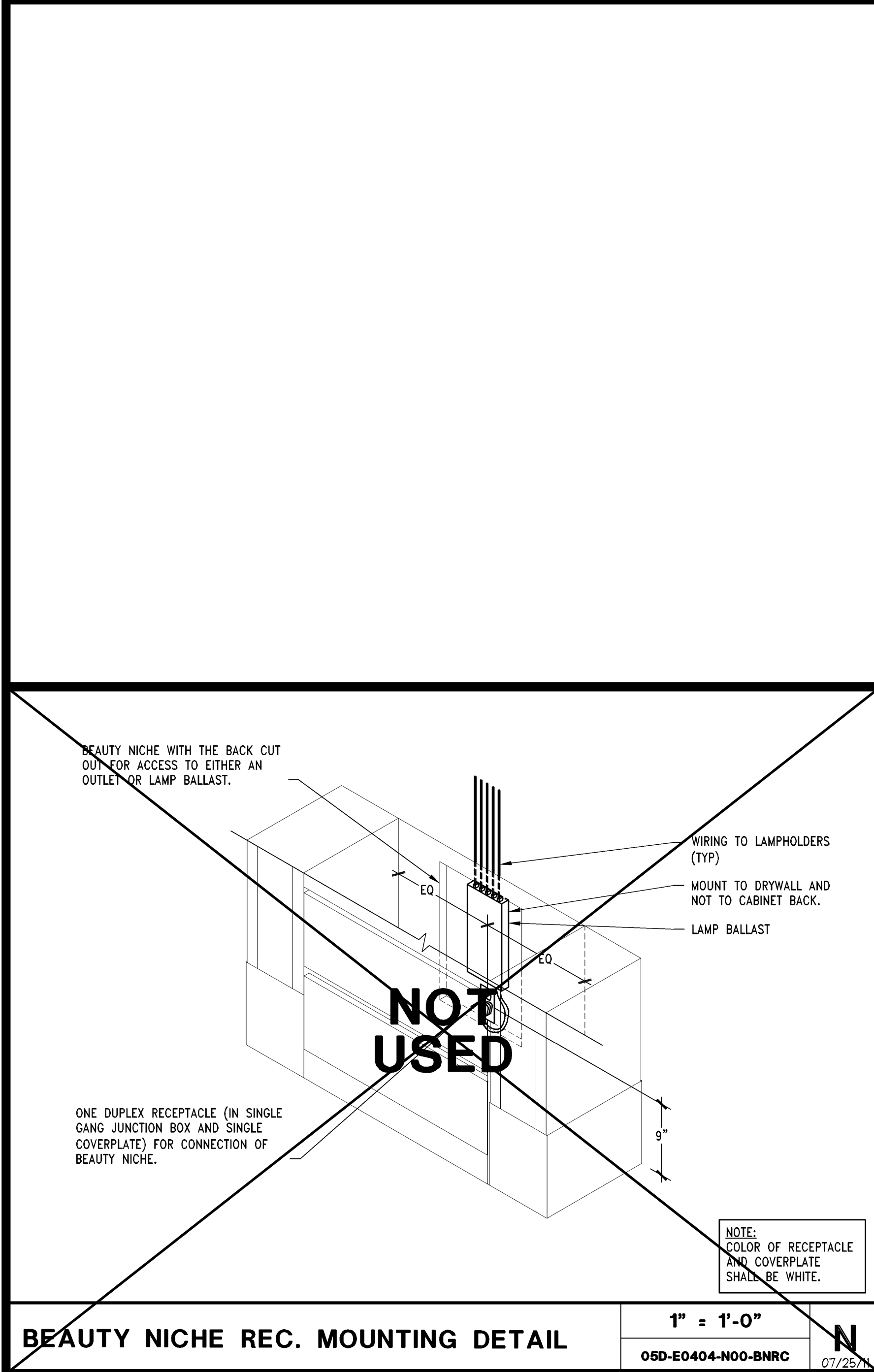


<b>POWER/DATA REQUIREMENTS FOR 6 CASHWRAP - (CW6R-V08)</b>	<b>1/2" = 1'-0"</b>	<b>M</b>
05D-E0404-M02-CW6R	05/22/13	



<b>POWER/DATA REQUIREMENTS FOR BACKWRAP - (BW6R-V07)</b>	<b>1/2" = 1'-0"</b>	<b>L</b>
05D-E0404-L02-BW6R	02/06/13	



**M-Engineering**  
750 Brookside Blvd.  
Westerville, Ohio 43081  
phone: 614.839.4639  
fax: 614.839.2222  
www.mengineering.us.com

**Limited brands**

LIMITED STORE PLANNING, INC.  
d/b/a STORE DESIGN & CONSTRUCTION  
Three Limited Parkway · Columbus, Ohio 43230  
Telephone: 614.415.7000 · Fax: 614.415.7349

**PROJECT INFORMATION:**

**010500295**

**VICTORIA'S SECRET**  
PARK PLAZA MALL  
8000 W. MARKHAM STREET  
SPACE# 2050  
LITTLE ROCK, AR 72205

**REVISIONS:**

REQUIRED BY: \_\_\_\_\_ DATE: \_\_\_\_\_

DESIGNED BY: \_\_\_\_\_

DRAWN BY: \_\_\_\_\_

CHECKED BY: \_\_\_\_\_

**DATE ISSUED:** 05/23/2014

**DESIGNED BY:** BDB

**DRAWN BY:** BDB

**CHECKED BY:** DFG

**ELECTRICAL DETAILS**

**DRAWING NUMBER:** E04.04

**PGK 2**

**FALL 2014**

**141153**

**00059784**

**A/E PROJECT #:**

**SCOPE:** REMODEL | PACKAGE: FULL REMODEL | NMA GENERATION: 00059784 | A/E PROJECT #: